

HUB68 CENTRE OF EXCELLENCE - AGING AND WELLNESS

56-68 Delancey Street, Ormiston

Landscape Works Package

By



For



TABLE OF CONTENTS

SHEET No.	SHEET TITLE	ISSUE
1	COVER SHEET	D
2	EXISTING SITE PLAN	D
3	OVERALL LANDSCAPE CONCEPT PLAN	D
4	LANDSCAPE CONCEPT PLAN STAGE 1	D
5	LANDSCAPE CONCEPT PLAN STAGE 2	D
6	LANDSCAPE CONCEPT PLAN STAGE 1 LEVEL 2 TERRACE	D
7	LANDSCAPE CONCEPT PLAN STAGE 2 LEVEL 2 TERRACE	D
8	BLOW-UP LANDSCAPE PLAN	D
9	BLOW-UP LANDSCAPE PLAN	D
10	BLOW-UP LANDSCAPE PLAN	D
11	BLOW-UP LANDSCAPE PLAN	D
12	PROPOSED PLANTING SCHEDULE	D
13	PROPOSED PLANTING SCHEDULE	D
14	PROPOSED PLANTING SCHEDULE	D
15	PROPOSED PLANTING SCHEDULE	D
16	STANDARD DETAILS AND SPECIFICATIONS	D

EXISTING SITE PLAN



NEARMAP DATED: 17/03/23



OVERALL LANDSCAPE CONCEPT PLAN



NEARMAP DATED: 17/03/23






- 1** LARGE FEATURE SHADE/ SCREEN TREE
Large canopied rounded tree species to deep planting zones capable of growing to a minimum height of 15m at maturity and to provide shade over the frontage, provide visual amenity and landscape softening of the proposed dwellings; Refer Proposed Planting Schedule (ie: *Cupaniopsis anacardioides*, *Delonix regia*, *Jacaranda mimosifolia*)
 - 2** MEDIUM SHADE/ SCREEN TREE
Medium sized trees that assist in the landscape presentation of neighbouring property; provides visual and climatic amenity, primary screening, as well as shade to hardstand areas; Refer Proposed Planting Schedule (ie: *Elaeocarpus eumundii*, *Tristaniopsis laurina* *Luscious*)
 - 3** SMALL FEATURE TREE
Small canopied feature trees adjacent to communal areas to provide climatic and visual amenity; Refer Proposed Planting Schedule (ie: *Lagerstroemia indica x fauriei* White, *Lagerstroemia indica x fauriei* Sioux)
 - 4** SCREEN PLANTING
Planting to provide visual amenity and privacy screening to neighbouring properties; Refer Proposed Planting Schedule (ie: *Syzygium australe* Resilience, *Radermachera pierrei* Summerscent)
 - 5** SHRUBS AND GROUNDCOVERS
Mass planting to large areas to assist in building presentation to the streetscape and to provide visual amenity; Refer Proposed Planting Schedule
 - 6** FEATURE SHADE PLANTING
Planting of shade tolerant planting with striking feature planting to provide visual amenity and interest. Refer Proposed Planting Schedule (ie: *Alocasia macrorrhiza*, *Calathea lutea*, *Cyathea cooperi*)
- PROPOSED SCREEN FENCE
1800mm high timber fence, if required
 - PROPOSED GARDEN EDGE
To future detail
 - LINE OF PROPOSED BASEMENT CARPARK UNDER
As taken from Architectural drawings



NEARMAP DATED: 17/03/23

LANDSCAPE CONCEPT PLAN - STAGE 1 & 2

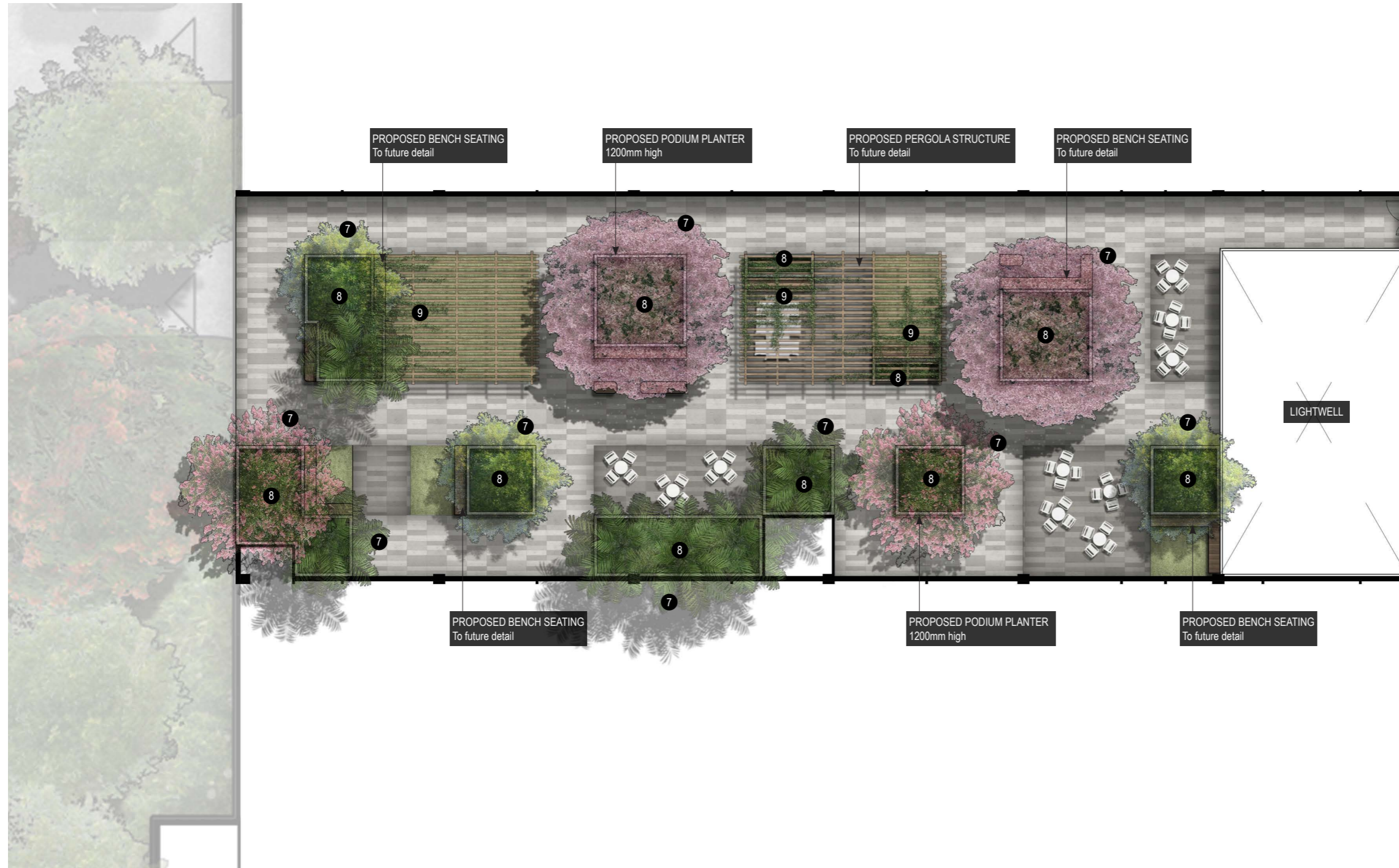
- 1** **LARGE FEATURE SHADE/ SCREEN TREE**
Large canopied rounded tree species to deep planting zones capable of growing to a minimum height of 15m at maturity and to provide shade over the frontage, provide visual amenity and landscape softening of the proposed dwellings; Refer Proposed Planting Schedule (ie: *Cupaniopsis anacardioides*, *Delonix regia*, *Jacaranda mimosifolia*)
 - 2** **MEDIUM SHADE/ SCREEN TREE**
Medium sized trees that assist in the landscape presentation of neighbouring property; provides visual and climatic amenity, primary screening, as well as shade to hardstand areas; Refer Proposed Planting Schedule (ie: *Elaeocarpus eumundii*, *Tristaniopsis laurina* *Luscious*)
 - 3** **SMALL FEATURE TREE**
Small canopied feature trees adjacent to communal areas to provide climatic and visual amenity; Refer Proposed Planting Schedule (ie: *Lagerstroemia indica x fauriei* White, *Lagerstroemia indica x fauriei* Sioux)
 - 4** **SCREEN PLANTING**
Planting to provide visual amenity and privacy screening to neighbouring properties; Refer Proposed Planting Schedule (ie: *Syzygium australe* Resilience, *Radermachera pierrei* Summerscent)
 - 5** **SHRUBS AND GROUNDCOVERS**
Mass planting to large areas to assist in building presentation to the streetscape and to provide visual amenity; Refer Proposed Planting Schedule
 - 6** **FEATURE SHADE PLANTING**
Planting of shade tolerant planting with striking feature planting to provide visual amenity and interest. Refer Proposed Planting Schedule (ie: *Alocasia macrorrhiza*, *Calathea lutea*, *Cyathea cooperi*)
-  **PROPOSED SCREEN FENCE**
1800mm high timber fence, if required
 -  **PROPOSED GARDEN EDGE**
To future detail
 -  **LINE OF PROPOSED BASEMENT CARPARK UNDER**
As taken from Architectural drawings



NEARMAP DATED: 17/03/23

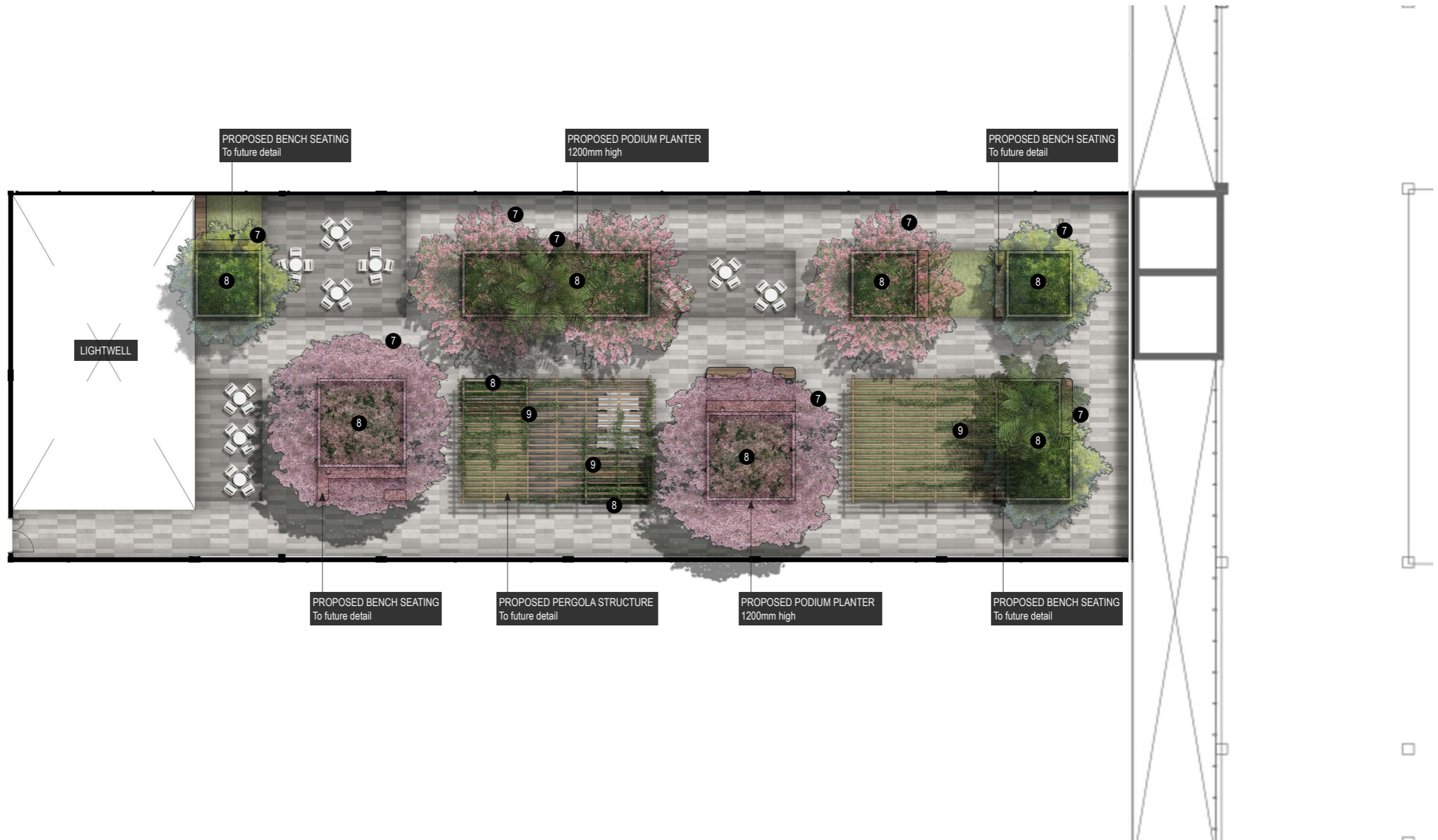
LANDSCAPE CONCEPT PLAN - STAGE 1 LEVEL 2 TERRACE

- 1** **LARGE FEATURE SHADE/ SCREEN TREE**
Large canopied rounded tree species to deep planting zones capable of growing to a minimum height of 15m at maturity and to provide shade over the frontage, provide visual amenity and landscape softening of the proposed dwellings; Refer Proposed Planting Schedule (ie: *Cupaniopsis anacardioides*, *Delonix regia*, *Jacaranda mimosifolia*)
- 2** **MEDIUM SHADE/ SCREEN TREE**
Medium sized trees that assist in the landscape presentation of neighbouring property; provides visual and climatic amenity, primary screening, as well as shade to hardstand areas; Refer Proposed Planting Schedule (ie: *Elaeocarpus eumundii*, *Tristaniopsis laurina* 'Luscious')
- 3** **SMALL FEATURE TREE**
Small canopied feature trees adjacent to communal areas to provide climatic and visual amenity; Refer Proposed Planting Schedule (ie: *Lagerstroemia indica x fauriei* White, *Lagerstroemia indica x fauriei* Sioux)
- 4** **SCREEN PLANTING**
Planting to provide visual amenity and privacy screening to neighbouring properties; Refer Proposed Planting Schedule (ie: *Syzygium australe* Resilience, *Radermachera pierrei* Summerscent)
- 5** **SHRUBS AND GROUNDCOVERS**
Mass planting to large areas to assist in building presentation to the streetscape and to provide visual amenity; Refer Proposed Planting Schedule
- 6** **FEATURE SHADE PLANTING**
Planting of shade tolerant planting with striking feature planting to provide visual amenity and interest. Refer Proposed Planting Schedule (ie: *Alocasia macrorrhiza*, *Calathea lutea*, *Cyathea cooperi*)
- 7** **PODIUM TREES AND PALM**
Median sized canopy trees to large podium planters to provide visual and climatic amenity to the podium level as well as vertical softening of the building; Refer Proposed Planting Schedule (ie: *Calodendron capense*, *Lagerstroemia indica x fauriei* Sioux, *Ptychosperma elegans*, *Tristaniopsis laurina* 'Luscious')
- 8** **PODIUM SHRUBS AND GROUNDCOVERS**
Mass planting to landscape areas on podium to provide visual amenity, soften building and podium planters; Refer Proposed Planting Schedule
- 9** **CLIMBERS**
Vertical plant softening to pergola structure to provide shade and increased visual amenity; Refer Proposed Planting Schedule (ie: *Hardenbergia violacea* Edna Walling Snow White, *Wisteria floribunda* Alba)



LANDSCAPE CONCEPT PLAN - STAGE 1 LEVEL 2 TERRACE

- 1** **LARGE FEATURE SHADE/ SCREEN TREE**
Large canopied rounded tree species to deep planting zones capable of growing to a minimum height of 15m at maturity and to provide shade over the frontage, provide visual amenity and landscape softening of the proposed dwellings; Refer Proposed Planting Schedule (ie: *Cupaniopsis anacardioides*, *Delonix regia*, *Jacaranda mimosifolia*)
- 2** **MEDIUM SHADE/ SCREEN TREE**
Medium sized trees that assist in the landscape presentation of neighbouring property; provides visual and climatic amenity, primary screening, as well as shade to hardstand areas; Refer Proposed Planting Schedule (ie: *Elaeocarpus eumundii*, *Tristaniopsis laurina* 'Luscious')
- 3** **SMALL FEATURE TREE**
Small canopied feature trees adjacent to communal areas to provide climatic and visual amenity; Refer Proposed Planting Schedule (ie: *Lagerstroemia indica x fauriei* White, *Lagerstroemia indica x fauriei* Sioux)
- 4** **SCREEN PLANTING**
Planting to provide visual amenity and privacy screening to neighbouring properties; Refer Proposed Planting Schedule (ie: *Syzygium australe* Resilience, *Radermachera pierrei* Summerscent)
- 5** **SHRUBS AND GROUNDCOVERS**
Mass planting to large areas to assist in building presentation to the streetscape and to provide visual amenity; Refer Proposed Planting Schedule
- 6** **FEATURE SHADE PLANTING**
Planting of shade tolerant planting with striking feature planting to provide visual amenity and interest. Refer Proposed Planting Schedule (ie: *Alocasia macrorrhiza*, *Calathea lutea*, *Cyathea cooperi*)
- 7** **PODIUM TREES AND PALM**
Median sized canopy trees to large podium planters to provide visual and climatic amenity to the podium level as well as vertical softening of the building; Refer Proposed Planting Schedule (ie: *Calodendron capense*, *Lagerstroemia indica x fauriei* Sioux, *Ptychosperma elegans*, *Tristaniopsis laurina* 'Luscious')
- 8** **PODIUM SHRUBS AND GROUNDCOVERS**
Mass planting to landscape areas on podium to provide visual amenity, soften building and podium planters; Refer Proposed Planting Schedule
- 9** **CLIMBERS**
Vertical plant softening to pergola structure to provide shade and increased visual amenity; Refer Proposed Planting Schedule (ie: *Hardenbergia violacea* Edna Walling Snow White, *Wisteria floribunda* Alba)



LANDSCAPE CONCEPT PLAN - STAGE 1 BLOW-UP PLAN

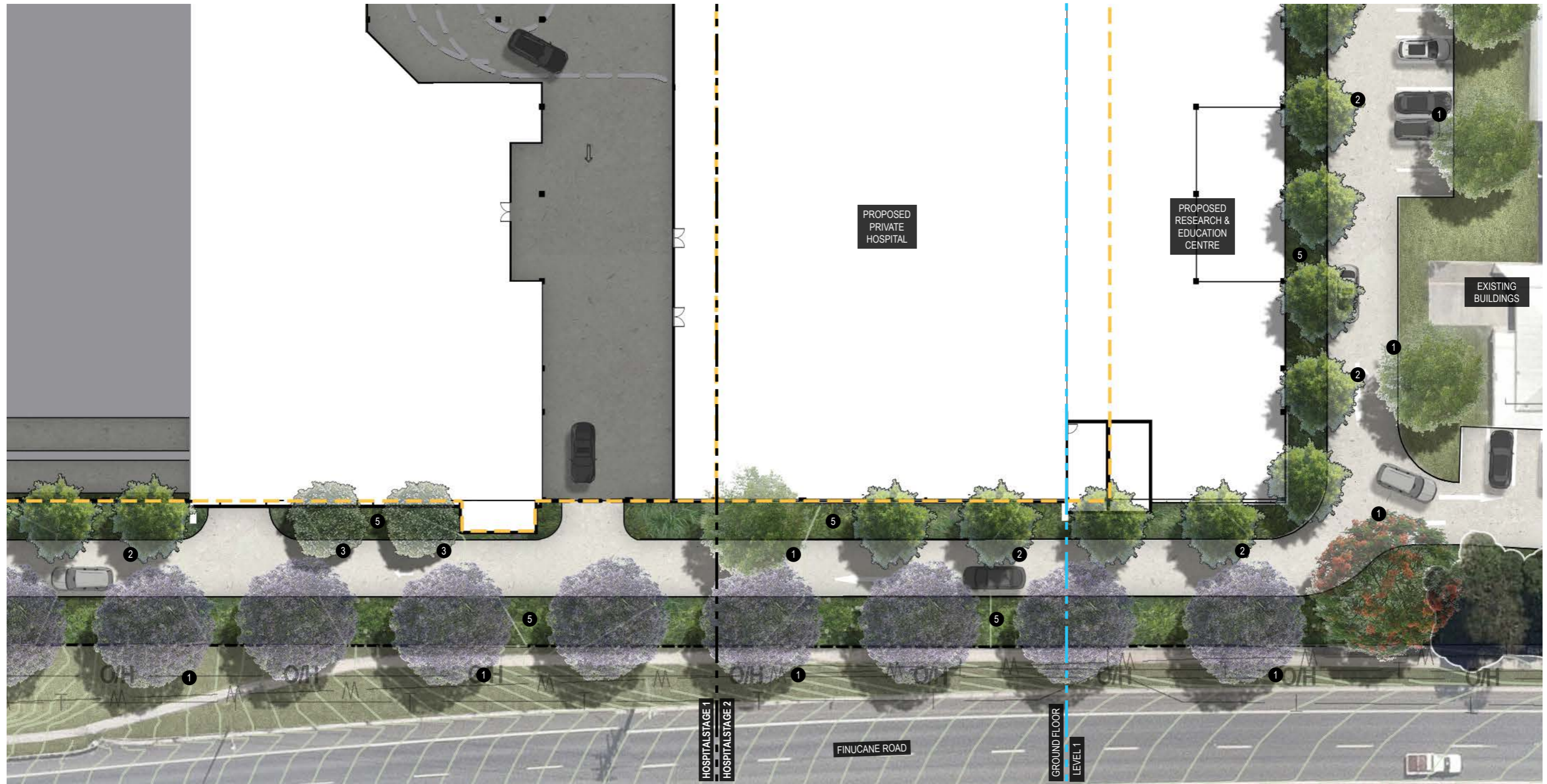
- 1** **LARGE FEATURE SHADE/ SCREEN TREE**
Large canopied rounded tree species to deep planting zones capable of growing to a minimum height of 15m at maturity and to provide shade over the frontage, provide visual amenity and landscape softening of the proposed dwellings; Refer Proposed Planting Schedule (ie: *Cupaniopsis anacardioides*, *Delonix regia*, *Jacaranda mimosifolia*)
 - 2** **MEDIUM SHADE/ SCREEN TREE**
Medium sized trees that assist in the landscape presentation of neighbouring property; provides visual and climatic amenity, primary screening, as well as shade to hardstand areas; Refer Proposed Planting Schedule (ie: *Elaeocarpus eumundii*, *Tristaniopsis laurina* *Luscious*)
 - 3** **SMALL FEATURE TREE**
Small canopied feature trees adjacent to communal areas to provide climatic and visual amenity; Refer Proposed Planting Schedule (ie: *Lagerstroemia indica x fauriei* White, *Lagerstroemia indica x fauriei* Sioux)
 - 4** **SCREEN PLANTING**
Planting to provide visual amenity and privacy screening to neighbouring properties; Refer Proposed Planting Schedule (ie: *Syzygium australe* Resilience, *Radermachera pierrei* Summerscent)
 - 5** **SHRUBS AND GROUNDCOVERS**
Mass planting to large areas to assist in building presentation to the streetscape and to provide visual amenity; Refer Proposed Planting Schedule
 - 6** **FEATURE SHADE PLANTING**
Planting of shade tolerant planting with striking feature planting to provide visual amenity and interest. Refer Proposed Planting Schedule (ie: *Alocasia macrorrhiza*, *Calathea lutea*, *Cyathea cooperi*)
- - - - - PROPOSED GARDEN EDGE
 To future detail
 - - - - - LINE OF PROPOSED BASEMENT
 CARPARK UNDER
 As taken from Architectural drawings



NEARMAP DATED: 17/03/23

LANDSCAPE CONCEPT PLAN - STAGE 2 BLOW-UP PLAN

- 1** LARGE FEATURE SHADE/ SCREEN TREE
Large canopied rounded tree species to deep planting zones capable of growing to a minimum height of 15m at maturity and to provide shade over the frontage, provide visual amenity and landscape softening of the proposed dwellings; Refer Proposed Planting Schedule (ie: *Cupaniopsis anacardioides*, *Delonix regia*, *Jacaranda mimosifolia*)
 - 2** MEDIUM SHADE/ SCREEN TREE
Medium sized trees that assist in the landscape presentation of neighbouring property; provides visual and climatic amenity, primary screening, as well as shade to hardstand areas; Refer Proposed Planting Schedule (ie: *Elaeocarpus eumundii*, *Tristaniopsis laurina* *Luscious*)
 - 3** SMALL FEATURE TREE
Small canopied feature trees adjacent to communal areas to provide climatic and visual amenity; Refer Proposed Planting Schedule (ie: *Lagerstroemia indica x fauriei* White, *Lagerstroemia indica x fauriei* Sioux)
 - 4** SCREEN PLANTING
Planting to provide visual amenity and privacy screening to neighbouring properties; Refer Proposed Planting Schedule (ie: *Syzygium australe* Resilience, *Radermachera pierrei* Summerscent)
 - 5** SHRUBS AND GROUNDCOVERS
Mass planting to large areas to assist in building presentation to the streetscape and to provide visual amenity; Refer Proposed Planting Schedule
 - 6** FEATURE SHADE PLANTING
Planting of shade tolerant planting with striking feature planting to provide visual amenity and interest. Refer Proposed Planting Schedule (ie: *Alocasia macrorrhiza*, *Calathea lutea*, *Cyathea cooperi*)
- - - - - PROPOSED GARDEN EDGE
 To future detail
 - - - - - LINE OF PROPOSED BASEMENT
 CARPARK UNDER
 As taken from Architectural drawings



NEARMAP DATED: 17/03/23

LANDSCAPE CONCEPT PLAN - STAGE 1 BLOW-UP PLAN

- 1** LARGE FEATURE SHADE/ SCREEN TREE
Large canopied rounded tree species to deep planting zones capable of growing to a minimum height of 15m at maturity and to provide shade over the frontage, provide visual amenity and landscape softening of the proposed dwellings; Refer Proposed Planting Schedule (ie: *Cupaniopsis anacardioides*, *Delonix regia*, *Jacaranda mimosifolia*)
 - 2** MEDIUM SHADE/ SCREEN TREE
Medium sized trees that assist in the landscape presentation of neighbouring property; provides visual and climatic amenity, primary screening, as well as shade to hardstand areas; Refer Proposed Planting Schedule (ie: *Elaeocarpus eumundii*, *Tristaniopsis laurina* *Luscious*)
 - 3** SMALL FEATURE TREE
Small canopied feature trees adjacent to communal areas to provide climatic and visual amenity; Refer Proposed Planting Schedule (ie: *Lagerstroemia indica x fauriei* White, *Lagerstroemia indica x fauriei* Sioux)
 - 4** SCREEN PLANTING
Planting to provide visual amenity and privacy screening to neighbouring properties; Refer Proposed Planting Schedule (ie: *Syzygium australe* Resilience, *Radermachera pierrei* Summerscent)
 - 5** SHRUBS AND GROUNDCOVERS
Mass planting to large areas to assist in building presentation to the streetscape and to provide visual amenity; Refer Proposed Planting Schedule
 - 6** FEATURE SHADE PLANTING
Planting of shade tolerant planting with striking feature planting to provide visual amenity and interest. Refer Proposed Planting Schedule (ie: *Alocasia macrorrhiza*, *Calathea lutea*, *Cyathea cooperi*)
- PROPOSED SCREEN FENCE
1800mm high timber fence, if required
 LINE OF PROPOSED BASEMENT
 CARPARK UNDER
As taken from Architectural drawings

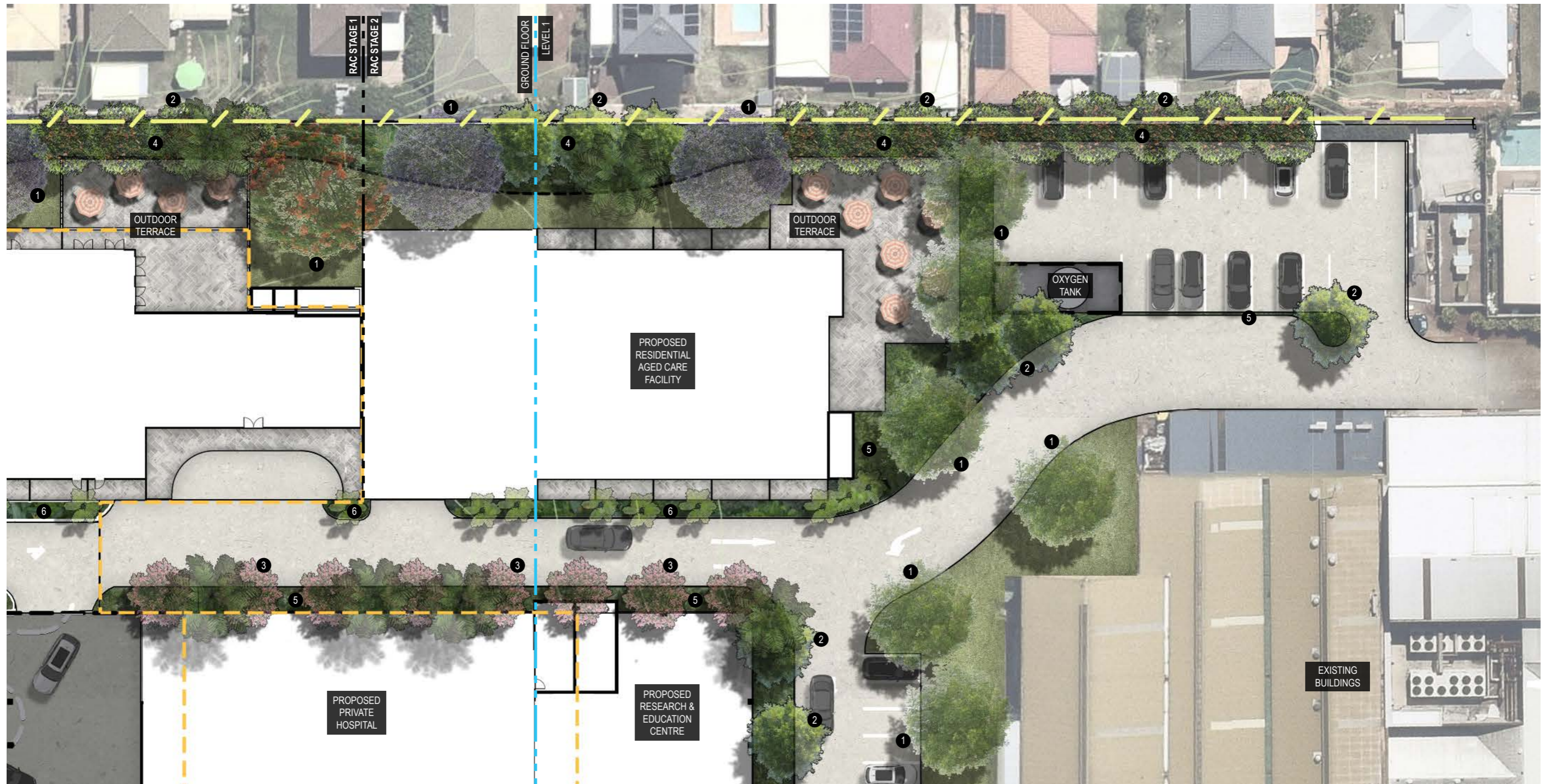


NEARMAP DATED: 17/03/23

LANDSCAPE CONCEPT PLAN - STAGE 2 BLOW-UP PLAN

- 1** LARGE FEATURE SHADE/ SCREEN TREE
Large canopied rounded tree species to deep planting zones capable of growing to a minimum height of 15m at maturity and to provide shade over the frontage, provide visual amenity and landscape softening of the proposed dwellings; Refer Proposed Planting Schedule (ie: *Cupaniopsis anacardioides*, *Delonix regia*, *Jacaranda mimosifolia*)
 - 2** MEDIUM SHADE/ SCREEN TREE
Medium sized trees that assist in the landscape presentation of neighbouring property; provides visual and climatic amenity, primary screening, as well as shade to hardstand areas; Refer Proposed Planting Schedule (ie: *Elaeocarpus eumundii*, *Tristaniopsis laurina* *Luscious*)
 - 3** SMALL FEATURE TREE
Small canopied feature trees adjacent to communal areas to provide climatic and visual amenity; Refer Proposed Planting Schedule (ie: *Lagerstroemia indica x fauriei* White, *Lagerstroemia indica x fauriei* Sioux)
 - 4** SCREEN PLANTING
Planting to provide visual amenity and privacy screening to neighbouring properties; Refer Proposed Planting Schedule (ie: *Syzygium australe* Resilience, *Radermachera pierrei* Summerscent)
 - 5** SHRUBS AND GROUNDCOVERS
Mass planting to large areas to assist in building presentation to the streetscape and to provide visual amenity; Refer Proposed Planting Schedule
 - 6** FEATURE SHADE PLANTING
Planting of shade tolerant planting with striking feature planting to provide visual amenity and interest. Refer Proposed Planting Schedule (ie: *Alocasia macrorrhiza*, *Calathea lutea*, *Cyathea cooperi*)
- PROPOSED SCREEN FENCE
1800mm high timber fence, if required

--- LINE OF PROPOSED BASEMENT
CARPARK UNDER
As taken from Architectural drawings



NEARMAP DATED: 17/03/23



- 1** LARGE FEATURE SHADE/ SCREEN TREE
Large canopied rounded tree species to deep planting zones capable of growing to a minimum height of 15m at maturity and to provide shade over the frontage, provide visual amenity and landscape softening of the proposed dwellings; Refer Proposed Planting Schedule (ie: *Cupaniopsis anacardioides*, *Delonix regia*, *Jacaranda mimosifolia*)
- 2** MEDIUM SHADE/ SCREEN TREE
Medium sized trees that assist in the landscape presentation of neighbouring property; provides visual and climatic amenity, primary screening, as well as shade to hardstand areas; Refer Proposed Planting Schedule (ie: *Elaeocarpus eumundii*, *Tristaniopsis laurina* 'Luscious')
- 3** SMALL FEATURE TREE
Small canopied feature trees adjacent to communal areas to provide climatic and visual amenity; Refer Proposed Planting Schedule (ie: *Lagerstroemia indica x fauriei* White, *Lagerstroemia indica x fauriei* Sioux)
- 4** SCREEN PLANTING
Planting to provide visual amenity and privacy screening to neighbouring properties; Refer Proposed Planting Schedule (ie: *Syzygium australe* Resilience, *Radermachera pierrei* Summerscent)
- 5** SHRUBS AND GROUNDCOVERS
Mass planting to large areas to assist in building presentation to the streetscape and to provide visual amenity; Refer Proposed Planting Schedule
- 6** FEATURE SHADE PLANTING
Planting of shade tolerant planting with striking feature planting to provide visual amenity and interest. Refer Proposed Planting Schedule (ie: *Alocasia macrorrhiza*, *Calathea lutea*, *Cyathea cooperi*)
- 7** PODIUM TREES AND PALM
Median sized canopy trees to large podium planters to provide visual and climatic amenity to the podium level as well as vertical softening of the building; Refer Proposed Planting Schedule (ie: *Calodendron capense*, *Lagerstroemia indica x fauriei* Sioux, *Ptychosperma elegans*, *Tristaniopsis laurina* 'Luscious')
- 8** PODIUM SHRUBS AND GROUNDCOVERS
Mass planting to landscape areas on podium to provide visual amenity, soften building and podium planters; Refer Proposed Planting Schedule
- 9** CLIMBERS
Vertical plant softening to pergola structure to provide shade and increased visual amenity; Refer Proposed Planting Schedule (ie: *Hardenbergia violacea* Edna Walling Snow White, *Wisteria floribunda* Alba)

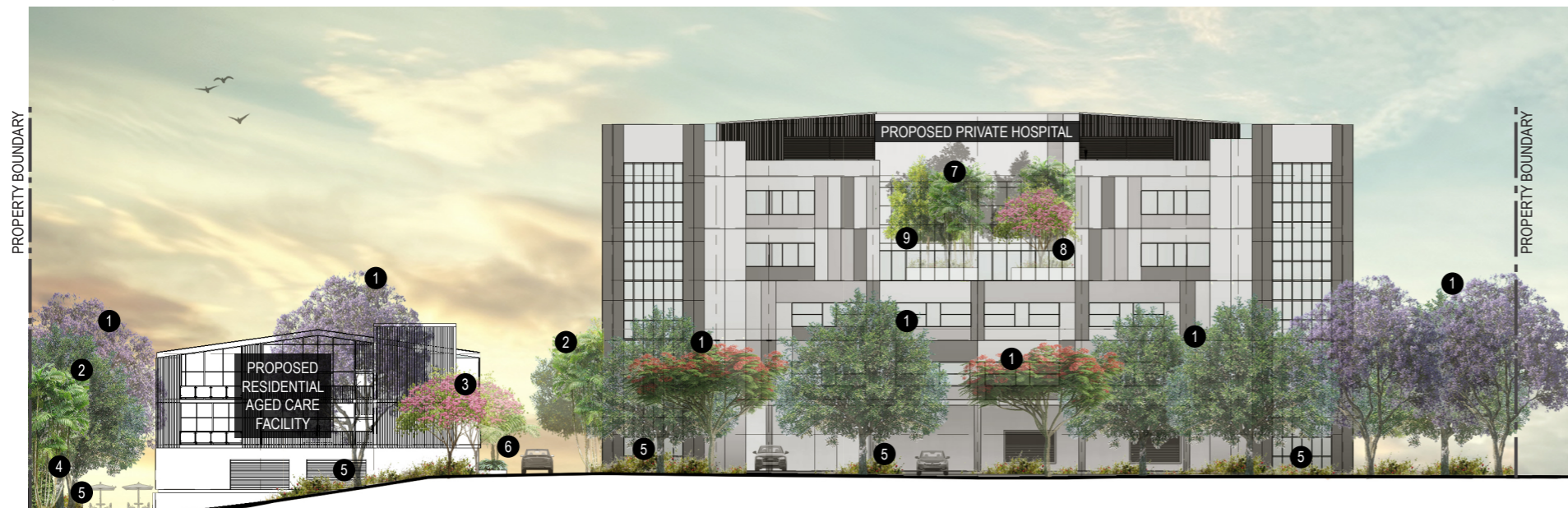
SOUTH ELEVATION

SCALE 1:500 @A3



WEST ELEVATION

SCALE 1:500 @A3



- 1 LARGE FEATURE SHADE/ SCREEN TREE**
 Large canopied rounded tree species to deep planting zones capable of growing to a minimum height of 15m at maturity and to provide shade over the frontage, provide visual amenity and landscape softening of the proposed dwellings; Refer Proposed Planting Schedule (ie: *Cupaniopsis anacardioides*, *Delonix regia*, *Jacaranda mimosifolia*)
- 2 MEDIUM SHADE/ SCREEN TREE**
 Medium sized trees that assist in the landscape presentation of neighbouring property; provides visual and climatic amenity, primary screening, as well as shade to hardstand areas; Refer Proposed Planting Schedule (ie: *Elaeocarpus eumundii*, *Tristaniopsis laurina* *Luscious*)
- 3 SMALL FEATURE TREE**
 Small canopied feature trees adjacent to communal areas to provide climatic and visual amenity; Refer Proposed Planting Schedule (ie: *Lagerstroemia indica x fauriei* White, *Lagerstroemia indica x fauriei* Sioux)
- 4 SCREEN PLANTING**
 Planting to provide visual amenity and privacy screening to neighbouring properties; Refer Proposed Planting Schedule (ie: *Syzygium australe* Resilience, *Radermachera pierrei* Summerscent)
- 5 SHRUBS AND GROUNDCOVERS**
 Mass planting to large areas to assist in building presentation to the streetscape and to provide visual amenity; Refer Proposed Planting Schedule
- 6 FEATURE SHADE PLANTING**
 Planting of shade tolerant planting with striking feature planting to provide visual amenity and interest. Refer Proposed Planting Schedule (ie: *Alocasia macrorrhiza*, *Calathea lutea*, *Cyathea cooperi*)

RESIDENTIAL AGED CARE FACILITY NORTH ELEVATION

SCALE 1:500 @ A3





CODE (m)	SPECIES	COMMON NAME	SIZE**	SPACING(m)	HEIGHT(m)	WIDTH
----------	---------	-------------	--------	------------	-----------	-------

PROPOSED LARGE FEATURE SHADE/ SCREEN TREES

As taken from SC6.24 Planting species planning scheme policy

1.1	<i>Cupaniopsis anacardioides</i>	Tuckeroo	45L	as shown	15	10
1.2	<i>Delonix regia</i>	Poinciana	100L	as shown	10	15
1.3	<i>Ficus macrocarpa</i> var. <i>hillii</i>	Hill's fig	200L	as shown	20	15
1.4	<i>Handroanthus impetiginosus</i>	Pink trumpet tree	100L	as shown	10	8
1.5	<i>Hymenosporum flavum</i>	Native Frangipani	100L	as shown	12	6
1.6	<i>Jacaranda mimosifolia</i>	Jacaranda	200L	as shown	15	12

PROPOSED MEDIUM SHADE/ SCREEN TREES

2.1	<i>Buckinghamia celsissima</i>	Ivory Curl	45L	as shown	8	5
2.2	<i>Elaeocarpus eumundii</i>	Smooth Leaved Quandong	45L	as shown	8	5
2.3	<i>Harpullia pendula</i>	Tulipwood	45L	as shown	15	6
2.4	<i>Ptychosperma elegans</i>	Solitaire Palm	200L	as shown	12	6
2.5	<i>Tristaniopsis laurina</i> Luscious	Water Gum	45L	as shown	10	5
2.6	<i>Xanthostemon chrysanthus</i>	Golden Penda	45L	as shown	12	5

**PLANT CONTAINER SIZE:

200L	200 Litre container stock min	Min. height at time of planting: 3.6m
100L	100 Litre container stock min	Min. height at time of planting: 2.4m
45L	45 Litre container stock min	Min. height at time of planting: 1.9-2.3m

The spacing of plants shown on plan have been derived as a compromise between growth rate, anticipated size, and the ability to provide a good vegetative cover within a reasonable space of time.



CODE (m)	SPECIES	COMMON NAME	SIZE**	SPACING(m)	HEIGHT(m)	WIDTH
PROPOSED SMALL FEATURE TREES						
3.1	<i>Calodendron capense</i>	Cape Chestnut Tree	200L	as shown	5-8	5-8
3.2	<i>Lagerstroemia indica x fauriei</i> Sioux	Pink Crepe Myrtle	200L	as shown	8	5
3.3	<i>Lagerstroemia indica x fauriei</i> White	White Crepe Myrtle	200L	as shown	8	6
3.4	<i>Magnolia grandiflora</i> Teddy Bear	Dwarf Magnolia Tree	200L	as shown	4	3
3.5	<i>Plumeria obtusa</i> Singapore White	Frangipani	200L	as shown	8	8

PROPOSED SCREEN PLANTING						
4.1	<i>Callistemon viminalis</i> Wildfire	Bottlebrush	200mm	1.8	4	2
4.2	<i>Grevillea longistyla x venusta</i> Firesprite	Grevillea Spider Flower	200mm	2	5	2
4.3	<i>Grevillea Moonlight</i>	Grevillea	300mm	2.5	5	3
4.4	<i>Radermachera pierrei</i> Summerscent	Summerscent	300mm	1.5	3-4	2.5
4.5	<i>Syzygium australe</i> Resilience	Lillypilly	300mm	1.5	3	2

****PLANT CONTAINER SIZE:**

200L	200 Litre container stock min	Min. height at time of planting: 3.6m
300mm	300mm dia minimum pot size	
200mm	200mm dia minimum pot size	

The spacing of plants shown on plan have been derived as a compromise between growth rate, anticipated size, and the ability to provide a good vegetative cover within a reasonable space of time.

PROPOSED PLANTING SCHEDULE



CODE (m)	SPECIES	COMMON NAME	SIZE**	SPACING(m)	HEIGHT(m)	WIDTH
PROPOSED SHRUBS AND GROUNDCOVERS						
5.1	<i>Alpinia nutans</i>	Dwarf Cardamom	200mm	1	1	1.2
5.2	<i>Alpinia zerumbet</i> Variegata	Variegated shell ginger	200mm	1.8	2	2
5.3	<i>Babingtonia virgata</i> La Petite	Heath Myrtle	200mm	0.8	1	1
5.4	<i>Carissa grandiflora</i>	Desert Star	200mm	0.7	1	1
5.5	<i>Gardenia augusta</i> Florida	Gardenia	200mm	0.8	1.2	1
5.6	<i>Gardenia jasminoides</i> Radicans	Creeping Gardenia	200mm	0.8	0.5	2
5.7	<i>Juniperus conferta</i>	Shore juniper	200mm	0.8	0.5	3
5.8	<i>Leptospermum hybrid</i> Pink Cascade	Pink Cascade	200mm	1	0.5-0.8	1-1.5
5.9	<i>Lirope muscari</i> Evergreen Giant	Lirope	140mm	0.6	0.8	0.8
5.10	<i>Pittosporum tobira</i> Wheelers Dwarf	Japanese pittosporum	200mm	1	1	1.2
5.11	<i>Rhaphiolepis indica</i> Rapopink Oriental Pink Indian Hawthorn hybrid	Rapopink Oriental Pink Indian Hawthorn hybrid	200mm	0.8	1	1
5.12	<i>Rosmarinus officinalis</i> Huntington Carpet	Creeping Rosemary	200mm	1	0.3-0.5	2

PROPOSED FEATURE SHADE PLANTING						
6.1	<i>Alocasia macrorrhiza</i>	Giant Elephant Ear	200mm	1.5	2	1.5
6.2	<i>Alpinia nutans</i>	Dwarf Cardamom	200mm	1	1	1.2
6.3	<i>Calathea lutea</i>	Cigar Plant	200mm	1.2	3	1.5
6.4	<i>Cyathea cooperi</i>	Lacey tree fern	300mm	as shown	5	3
6.5	<i>Thaumatococcus</i> Xanadu	Xanadu	140mm	0.8	1	1

****PLANT CONTAINER SIZE:**

300mm	300mm dia minimum pot size
200mm	200mm dia minimum pot size
140mm	140mm dia minimum pot size

The spacing of plants shown on plan have been derived as a compromise between growth rate, anticipated size, and the ability to provide a good vegetative cover within a reasonable space of time.

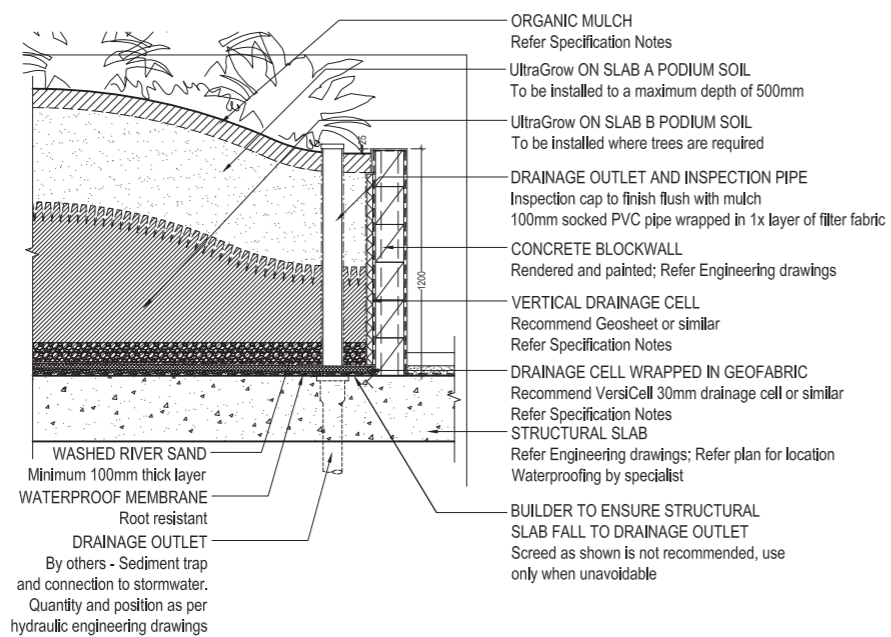


CODE (m)	SPECIES	COMMON NAME	SIZE**	SPACING(m)	HEIGHT(m)	WIDTH
PROPOSED PODIUM TREES AND PALM						
3.1	<i>Calodendron capense</i>	Cape Chestnut Tree	200L	as shown	8	8
3.2	<i>Lagerstroemia indica x fauriei</i> Sioux	Pink Crepe Myrtle	200L	as shown	8	6
2.4	<i>Ptychosperma elegans</i>	Solitaire Palm	200L	as shown	12	6
2.5	<i>Tristaniopsis laurina</i> Luscious	Water Gum	100L	as shown	10	5
PROPOSED PODIUM SHRUBS AND GROUNDCOVERS						
8.1	<i>Carpobrotus rossii</i> White Hot	Karkalla	140mm	0.8	0.4	1
8.2	<i>Gardenia jasminoides</i> Radicans	Creeping Gardenia	200mm	0.8	0.5	2
8.3	<i>Leptospermum hybrid</i> Pink Cascade	Pink Cascade	140mm	1	0.8	1.5
8.4	<i>Rosmarinus officinalis</i> Huntington Carpet	Creeping Rosemary	140mm	1	0.5	2
PROPOSED CLIMBERS						
9.1	<i>Hardenbergia violacea</i> Edna Walling Snow White	Corel Pea	200mm	as shown	3	2
9.2	<i>Wisteria floribunda</i> Alba	White Japanese Wisteria	200mm	3	3-9	3-6

****PLANT CONTAINER SIZE:**

- 200L** 200 Litre container stock min Min. height at time of planting: 3.6m
- 100L** 100 Litre container stock min Min. height at time of planting: 2.4m
- 200mm** 200mm dia minimum pot size
- 140mm** 140mm dia minimum pot size

The spacing of plants shown on plan have been derived as a compromise between growth rate, anticipated size, and the ability to provide a good vegetative cover within a reasonable space of time.



TYPICAL 1200mm HIGH PODIUM PLANTER
SCALE 1:40 @ A3

LANDSCAPE SPECIFICATION NOTES

PODIUM PLANTERS

TOPSOIL:
Supply and install imported topsoil suitable for podium planters (UltraGrow Platinum Podium and Container Mix.) Proposed topsoil must comply with Australian Standards AS4419-2003 and Australian Standards AS3743-2003 'Potting Mixes'. Provide certification of soil types delivered to site, as per AS3743-2003.

TOPSOIL AERATION AND DECOMPOSITION:
Contractor must allow to maintain finished levels allowing for potential slumping and subsidence. Tamping down and light wetting up of soil during placement on podium to ensure air pockets and voids are managed out.

FERTILIZER:
Ensure soil nutrient and PH levels are suitable for specific plant species (ie. native or exotic species). Apply appropriate slow release fertilizer (ie. native / exotic species) to each plant as per manufacturer's recommended rates. A slow or controlled release fertiliser organic or inorganic to be incorporated generally into the imported (or excavated / site topsoil). We recommend the following:

Inorganic Slow or Controlled Release fertilisers:

- Osmocote
- Nutricote
- Macrocode
- E-Scape PRO by eCo-Environment

- Organic slow release:
- Dynamic Lifter
 - Organic Link by Plant of Health

PLANTING:
To locations as shown on the plan and to the sizes and numbers as shown on the schedule.

ORGANIC MULCHING:
Where specified, proposed mulch must comply with Australian Standards AS4454-2003. Spread 1" Hoop Bark to a minimum depth of 75mm entirely over planting bed areas.

INORGANIC MULCH:
Where specified, spread recycled brick to a minimum depth of 20mm entirely over planting bed areas. Where specified, spread Winter Grey 20-60mm (ie: <https://centenarylandscaping.com.au/shop-products/pebbles-gravels-rock/winter-grey/>) to a minimum depth of 75mm entirely over planting bed areas, unless otherwise shown in the details.

DRAINAGE CELLS:
Use drainage cells to podium planters

Horizontal Application:
Install VersiCell 30mm (<https://elmich.com.au/products/versicell-subsoil-drainage/>) or similar drainage cell, installed to manufacturer's recommendations. Ensure all corners and sharp edges are removed and tapped to avoid damaging the waterproof membrane. Apply final layer of geofabric/ filter fabric (refer below) over entire drain cell area. Lap material minimum 400mm at junctions or joins. Turn fabric up walls and service risers minimum 300mm. Ensure neat holes cut in around services with minimum 15mm clearance.

Vertical Application (to planter walls):
Install to manufacturer's specifications to all podium planter garden bed walls over 400mm in height. Lapping joints and junctions by minimum 100mm.

GEOFABRIC:
Install Filterwrap (<https://www.geofabrics.co/products/filterwrap™>) as per Geosystems Australia details and specifications.

VOID FILLER:
Install polystyrene blocks cut to size to podium planters as shown on details. Contact Polystyrene Products (or similar) for space fillers. Ensure geofabric is installed over, to separate soil media from the polystyrene product. (<https://www.polystyreneproducts.com.au>)

IRRIGATION:
Ensure irrigation is provided as per specification.